



# Integra



Security and comfort  
**INTEGRATION**



# Integration with SATEL

Smart buildings integrate a number of systems which make operation of the building easier and more useful. These systems are integrated with each other in such a way that they can use each other's resources and the processes that take place between them are largely automated to give your clients control of their homes or offices through an easy to use interface. Integration with these control systems, provided by many manufacturers, as well as based on various standards, is currently of key importance.



These integrations aim to increase the convenience of using and managing the building, while making it more energy efficient and increasing the potential to save energy and money. A smart building should also be very secure. Therefore remember to include an integrated intruder alarm system in your design.

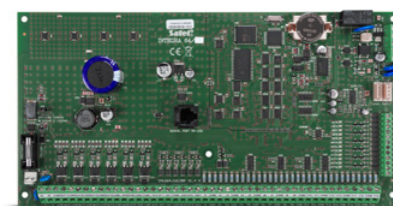
## integra

Among their numerous advantages, SATEL's advanced alarm control panels from the INTEGRA Family offer support for an open integration protocol, so they can work with various types of systems, including smart home, CCTV, access control, fire alarms etc.

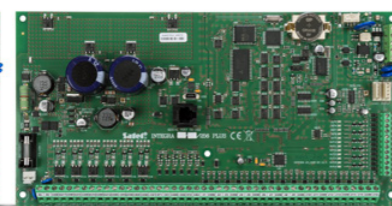
These control panels can either control integrated systems or can accept control commands from those systems. Alarm systems based on the INTEGRA control panels can also be part of complex, advanced solutions for comprehensive building management.



INTEGRA 128  
INTEGRA 128-WRL  
INTEGRA 64  
INTEGRA 32  
INTEGRA 24



INTEGRA 64



INTEGRA 256 Plus



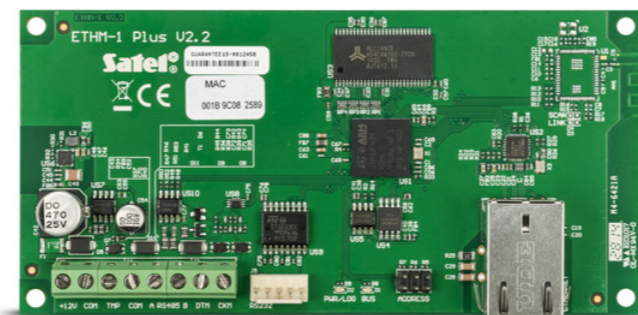
INTEGRA 256 Plus  
INTEGRA 128 Plus  
INTEGRA 64 Plus

# Examples of integration with SATEL



# Integration modules

The INTEGRA control panels communicate with other systems through modules using an open integration protocol.



### ETHM-1 Plus

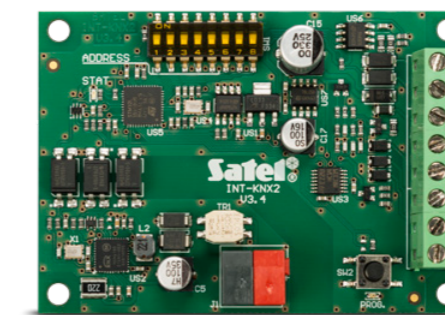
– communication via TCP/IP

### INT-RS Plus

– communication via RS-232



For integration with KNX – an international building automation standard – the dedicated INT-KNX-2 module is used.



### INT-KNX-2

– communication on the KNX bus

The integration of systems based on INTEGRA alarm control panels with a wide range of KNX devices is a solution for demanding customers who expect a highly secure, automated building.

### Convenient control

For day-to-day control of both systems you can use the **INT-TSI** touch keypad with an intuitive, graphical interface. Remote control of the alarm system and KNX system functions can be carried out using the **INTEGRA CONTROL** mobile application.





# Smart buildings save you money

Optimisation of processes related to, for example, lighting or heating control alone can reduce the cost of building maintenance and bring tangible savings on a monthly or yearly basis. Effective energy management is also part of the philosophy of eco-friendly activities.



Nearly **5 million** people leave a light on when going to bed in the UK which equates to **£3.5 million** wasted on energy bills every night.



## Activating the "Night" scenario:

- arms the alarm system
- turns off unnecessary lights (e.g. the ground floor)
- switches heating to ECO mode.



Over **£10 million** every day – this is the cost of leaving the lights on when leaving the house.



## Activating the "Leaving Home" scenario:

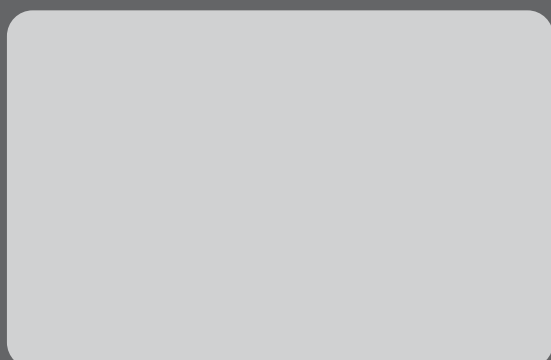
- arms the alarm system
- turns off the lights
- switches heating / air conditioning to eco mode.

**Inclusion of the INTEGRA alarm system as part of a smart building means tangible savings, comfort and security.**



Budowlanych 66, 80-298 Gdansk, Poland  
tel. +48 58 320 94 00; fax + 48 58 320 94 01  
e-mail: trade@satel.pl

[www.satel.eu](http://www.satel.eu)



The manufacturer reserves the right to change the specification and technical data of devices.  
Images shown are for general information only and may differ from actual products.  
U-INTEGRACJA-EN0120

## 30 YEARS OF EXPERIENCE

Professional protection of each type of premises, as well as people staying therein, through advanced, yet functional and cost-effective solutions – these few words may serve as the shortest description of the mission of SATEL, a manufacturer of security systems with involvement of 100% Polish capital. Due to integrity in business and a special emphasis on high quality and a wide range of products offered, the SATEL brand has been highly appreciated in the industry for 30 years.

This philosophy of management and hard work of more than 300 SATEL's employees produce tangible results. The wide range of over 400 offered products provides countless opportunities to create security, home automation, fire alarm, access control and monitoring systems, tailored to the individual needs of each user. At the same time, these systems meet all requirements prescribed by Polish and international regulations and industry standards.

Bringing the functionality of devices into line with current requirements and expectations of the market with the use of the latest technologies is one of the main objectives of SATEL. For this reason the design and production departments of the Company are continuously being modernized and expanded. A natural consequence of all actions aimed at the production of top-quality devices was the introduction of the quality management system conforming to ISO 9001 in 2002. Regardless of this certification, SATEL also carries out a full functional test of all products leaving the production line, thus ensuring reliability of the manufactured devices. Focusing on modern design and attaching importance to the highest levels of quality and functionality of its products, SATEL has gained many satisfied customers not only in Poland but also in more than 50 markets worldwide.