

MADE TO PROTECT

Satel®

Access control system
ACCO NET

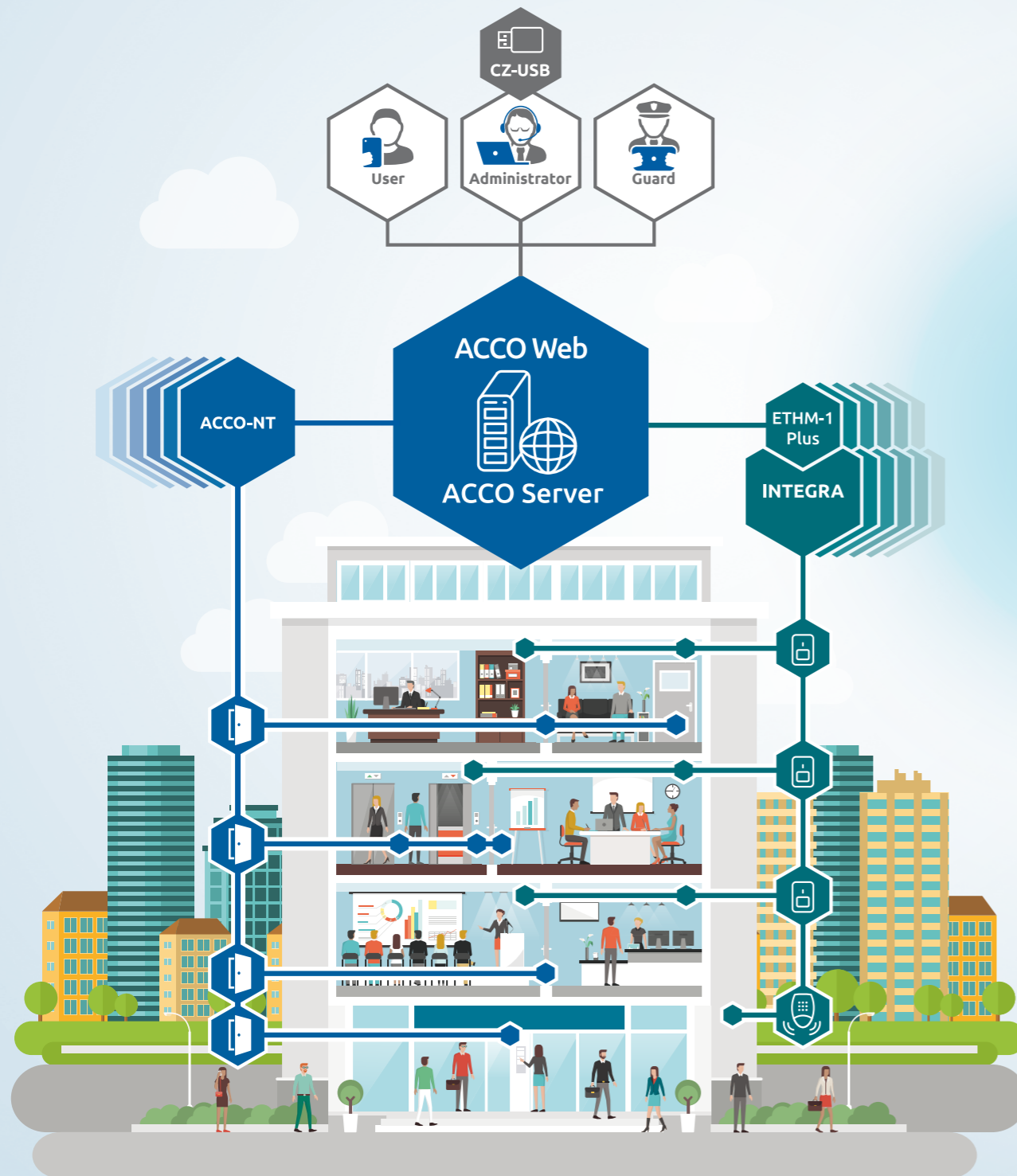


www.satel.eu

DISPERSED STRUCTURE
CENTRAL MANAGEMENT
REMOTE CONTROL

ACCO NET

CENTRAL SYSTEM MANAGEMENT • DISPERSED STRUCTURE



access control system

UNLIMITED NUMBER OF FACILITIES • FLEXIBILITY • SAFETY

Flexible adjustment

- unlimited number of facilities in various system structure configurations
- many smaller facilities gathered into one, centrally managed, system
- system managed from many locations at the same time, unlimited in terms of size
- supports 65,000 users

Dispersed structure

- control and system adjustable from any place in the world:
 - the system can be managed by many administrators
 - supervision over the system by the guards
 - maintenance of the system by users

Stable and secure communication

- data transfer with TCP/IP protocol
- advanced encrypting of the data sent

Simple and intuitive maintenance

- access to the system from an Internet browser via ACCO Web application
- maintenance of ACCO Web from mobile devices
- fast and convenient reading of cards, key tags using CZ-USB reader connected directly to the computer port

Full operational safety

- multilevel user data and event history recording system
- automatic download of „delayed“ data after the connection has been restored

Varied user identification and authorization methods

- card / key tag / chip
- access code
- keyfob
- possibility to program double authorization (card/key tag and access code)



INTEGRATION WITH THE ALARM SYSTEM

- simplified security and access control supervision in protected buildings
- INTEGRA partitions and ACCO-NT zones integration:
 - convenient administration of ACCO NET user privileges
 - integrated partitions of the INTEGRA system can be controlled by up to 8,000 ACCO-NT users
 - possibility to arm and disarm integrated partitions and zones from terminals, ACCO Soft and ACCO Web softwares
 - visualization of the states of integrated partitions, zones and outputs of the alarm control panels
- common event history
- ability to program automatic blocking / unblocking of selected zones of the ACCO NET system in the event of a burglary / fire alarm in an integrated partition of the INTEGRA system



ACCO NET

ACCO NET is a scalable access control system with a dispersed structure. The main components of this solution include: server software ACCO Server and ACCO-NT control panels. The executive devices are the door controllers from ACCO-KP series, which are connected to the readers used for users identification. The comprehensive functionality, intuitive management methods as well as flexible construction and development of the system structure allow ACCO NET to fulfil requirements of large and medium enterprises with many divisions such as: commercial networks, banks, customer service points and other institutions. The simplicity and convenience of the system are ensured by ACCO Web internet application, available via the Internet browser. This tool allows for managing the system from any given location in the world – both from stationary computers and mobile devices.

Application



Commercial networks



Banks



National institutions



Company divisions

System functionality

Access rights in **ACCO NET** system are based on access control zones, which allows for advanced authorizations administration both for individual users and for whole groups. You can define temporary access schedules and walking routes along which the users may move around the facility. Moreover, the anti-passback function excludes the possibility that an ID might be used a second time to enter the protected zone without leaving it earlier.



ACCO NET system is a flexible, scalable and safe solution. The communication between ACCO Server and ACCO-NT panels is encrypted, which prevents intrusion of unwanted persons.

ID	Name	Access Time	Access Zone	Access Method	Access Status	Access Point	Access Type	Access Duration	Access Location	Access Route	Access Notes
12345678	John Doe	2014-01-01 10:00:00	Zone A	Card	Success	12345678	Normal	10:00:00 - 18:00:00	Zone A	Zone A	
12345678	John Doe	2014-01-01 10:05:00	Zone B	Card	Success	12345678	Normal	10:00:00 - 18:00:00	Zone B	Zone A -> Zone B	
12345678	John Doe	2014-01-01 10:10:00	Zone C	Card	Success	12345678	Normal	10:00:00 - 18:00:00	Zone C	Zone A -> Zone B -> Zone C	
12345678	John Doe	2014-01-01 10:15:00	Zone D	Card	Success	12345678	Normal	10:00:00 - 18:00:00	Zone D	Zone A -> Zone B -> Zone C -> Zone D	
12345678	John Doe	2014-01-01 10:20:00	Zone E	Card	Success	12345678	Normal	10:00:00 - 18:00:00	Zone E	Zone A -> Zone B -> Zone C -> Zone D -> Zone E	
12345678	John Doe	2014-01-01 10:25:00	Zone F	Card	Success	12345678	Normal	10:00:00 - 18:00:00	Zone F	Zone A -> Zone B -> Zone C -> Zone D -> Zone E -> Zone F	
12345678	John Doe	2014-01-01 10:30:00	Zone G	Card	Success	12345678	Normal	10:00:00 - 18:00:00	Zone G	Zone A -> Zone B -> Zone C -> Zone D -> Zone E -> Zone F -> Zone G	
12345678	John Doe	2014-01-01 10:35:00	Zone H	Card	Success	12345678	Normal	10:00:00 - 18:00:00	Zone H	Zone A -> Zone B -> Zone C -> Zone D -> Zone E -> Zone F -> Zone G -> Zone H	
12345678	John Doe	2014-01-01 10:40:00	Zone I	Card	Success	12345678	Normal	10:00:00 - 18:00:00	Zone I	Zone A -> Zone B -> Zone C -> Zone D -> Zone E -> Zone F -> Zone G -> Zone H -> Zone I	
12345678	John Doe	2014-01-01 10:45:00	Zone J	Card	Success	12345678	Normal	10:00:00 - 18:00:00	Zone J	Zone A -> Zone B -> Zone C -> Zone D -> Zone E -> Zone F -> Zone G -> Zone H -> Zone I -> Zone J	

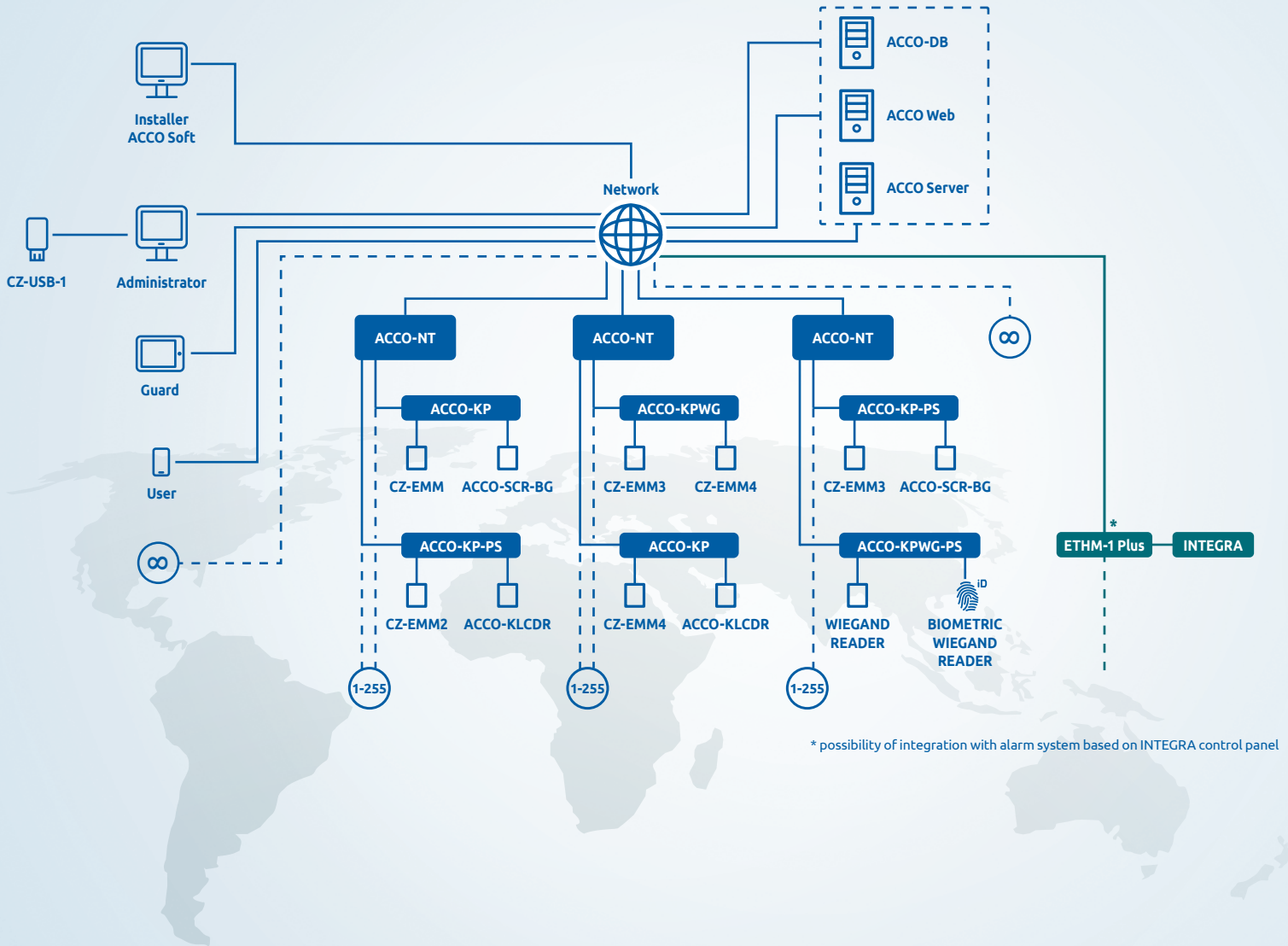
Owing to the possibility of generating reports in the most common formats (XML, CSV, XLSX) and full control of presence, **ACCO NET** system allows the calculation of presence time according to assigned rules and/or presence calendar. It is also possible to check the current location of the user and the route which that user has been following.



ACCO NET allows creation of the system for **65,000** users



system structure



* possibility of integration with alarm system based on INTEGRA control panel

Advanced software

ACCO NET is an access control system, whose management, administration and configuration are based on advanced software. Its components are installed on a computer with the Debian or CentOS system, on a single machine or on several machines, depending on the system size.

- **ACCO** Server software is responsible for the communication between an unlimited number of control panels. This provides us with an advanced tool which may be used for managing any number of facilities by creating one dispersed, scalable, global system. Communication takes place via encrypted TCP/IP transmissions.
- **ACCO-DB** database stores configuration and information about the system structure, data of 65,000 users and unlimited number of events.
- **ACCO** Web application server enables managing the access to facilities from any location in the world via an Internet browser.

ACCO-NT control panel

- Is responsible for the communication between the door controller and **ACCO** Server.
- It has two RS-485 buses, whose total length may be up to 2,400 m.
- One control panel may be connected to 255 door controllers.
- Additionally, the panel may be developed with the following modules: keyfobs maintenance, inputs and outputs. This allows for adjusting the functionality to fit the investors' requirements owing to logic functions. As a result the system offers control options e.g. with barriers, gates, elevators, rollers, awnings or light.
- Every **ACCO-NT** control panel allows for creation of up to 255 zones. Every zone may include a number of single doors which are secured by the controllers from **ACCO-KP** and **ACCO-KPWG** series.
- The USB port located on the control panel board facilitates the first configuration of the control panel for the installer.
- The control panel is powered with a buffer battery **APS-412** or **APS-612**, assuring that the control panel continues to operate even during a power cut.
- A single **ACCO-NT** control panel may be integrated with many intruder alarms based on **INTEGRA** control panels.

ACCO-NT control panel may store up to 1,000,000 own events and 100,000 events from each controller as well as data of 8,000 users. If the connection with the server is lost e.g. due to a damage of the Internet connection, it guarantees that the part of the system for which the given panel is responsible, keeps its full functionality.



ACCO NET Controllers and terminals

Single doors in a facility are supervised by door controllers, which are connected with an RS-485 bus. This connection allows for communication with ACCO-NT control panel and updating the software on all modules connected to it at the same time. SATEL's offer also includes two door controllers: ACCO-KP and ACCO-KPWG, which are available in two versions: with an in-built battery and without it. ACCO-KP models offer smooth cooperation with SATEL devices and ACCO-KPWG models additionally assure maintenance of WIEGAND 26, 32, 34, 40, 56 and Dallas protocols.

Every controller in the system may record information in non-volatile memory for 1,024 users and over 24,000 events. This protection measure allows for continuous, correct functioning of the system even if e.g. the bus connecting the controllers with the control panel is purposefully damaged. After the communication is restored, the control panel and the server automatically download the „delayed“ events.

The controllers are connected to terminals which are used for identification of the users. All models of this device are equipped in a proximity card reader. If the access is to be granted based on an entered code or if the access

is to be possible for both options jointly, you have to choose a terminal with a keyboard. It is also possible to connect third-party devices via WIEGAND protocol which broadens the system functionality e.g. by fingerprints verification. This option is immensely useful in case of facilities such as registries with classified data or archives. The controllers outputs also allow for connecting two-way gates and tripods. System operation is facilitated by keyfobs that are individually programmed and customized to the needs of a specific person. Every user of the system may be assigned 4 IDs (e.g. cards, key tags), a code and a keyfob.

We can add the already existing **ACCO** systems to **ACCO NET**. You only have to connect the controllers to the **ACCO-NT** control panel bus and update their firmware.



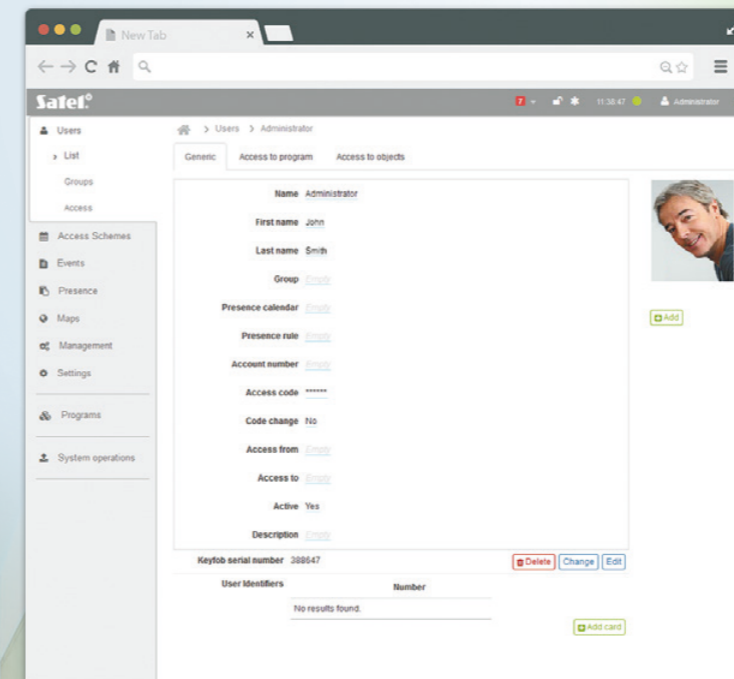
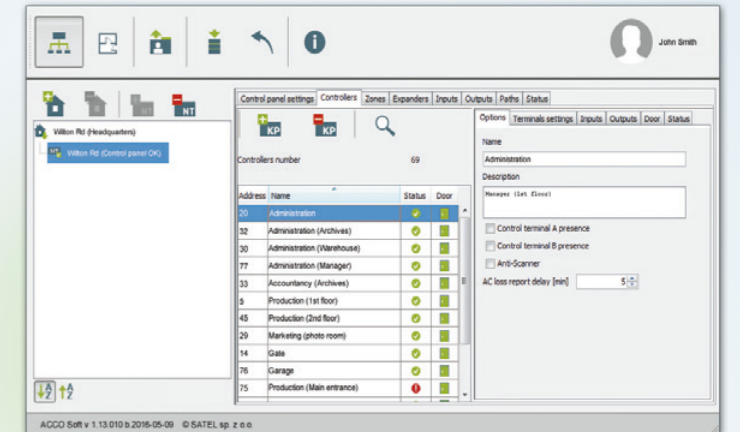
System installation

ACCO Server is installed on the operation system called Debian – a free opensource Linux distribution. Debian is recognized as a stable system with high quality and low equipment requirements. The server may be installed also in CentOS system, which is accepted by IT safety departments in many companies. Both Debian and CentOS, thanks to their popularity as well as approved and proper functioning, allow for ACCO NET system to be used by a very broad spectrum of users.

A specially developed installation script makes it easier for the installer to prepare and launch, step by step, ACCO Server, while automatically adding and setting the components necessary for proper functioning and obtaining full functionality of the system such as MySQL database, PHP language interpreter, WWW Apache server, JAVA and ACCO Web application server.

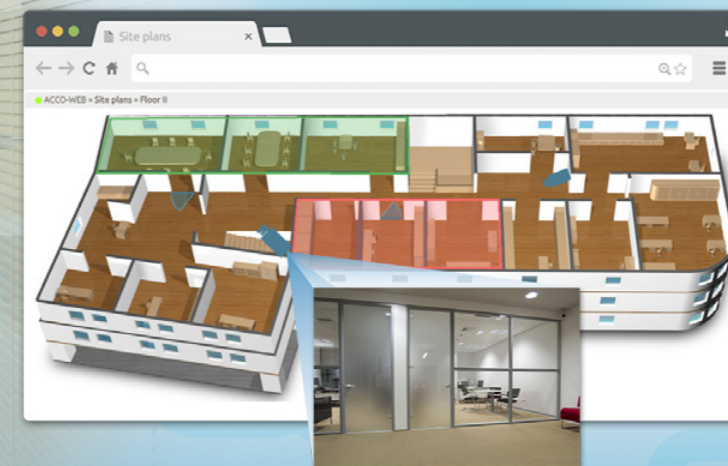
ACCO Soft an installer tool for remote system configuration

- creating system structure
- creating access control zones
- setting **ACCO-NT** control panels
- possibility of remote update of firmware on **ACCO-NT** control panels
 - **ACCO-KP** ability to remotely update the firmware of **ACCO-KP** controllers
 - adding and configuration of expansion modules (**INT-E, INT-O, INT-PP, INT-RX-S, INT-ORS, INT-IORS**)
 - creating access routes
 - access from any place in the world
- integration configuration of **ACCO NET** zones and **INTEGRA** systems partitions



ACCO Web a tool for remote system management

- access from any place in the world via a browser
- maintenance via mobile devices
- possibility for multiple persons to log in at the same time
- adding and managing users (CZ-USB reader)
- GDPR compliance
 - ◆ generating personal data processing document / statement / consent
 - ◆ the right to be forgotten
- generating personalized badges (to PDF file / for printout)
- creating rules and schedules
- creating presence reports, for any number of users at the same time
- presence panel - counter of people in a zone / premise + quick report
- checking the user status / presence by historical data
- event history preview with filtering option (also concerning the integrated INTEGRA alarm systems)
- system operation from the "Management" menu and multi-level maps (created in the Map Editor program)
- server, control panels and controllers status preview
- camera placement in the facility preview
 - preview from IP cameras (link opened in a separated browser window)
 - anti-passback function
 - control and preview of the status of INTEGRA alarm systems partitions integrated with ACCO NET



Satel
MADE TO PROTECT



MADE TO PROTECT

ul. Budowlanych 66, 80-298 Gdansk, Poland
tel. +48 58 320 94 00; fax + 48 58 320 94 01
e-mail: trade@satel.pl

www.satel.eu



The manufacturer reserves the right to change the specification and technical data of devices.
Images shown are for general information only and may differ from actual products.
U-ACCUNET-EN0120

30 YEARS OF EXPERIENCE

Professional protection of each type of premises, as well as people staying therein, through advanced, yet functional and cost-effective solutions – these few words may serve as the shortest description of the mission of SATEL, a manufacturer of security systems with involvement of 100% Polish capital. Due to integrity in business and a special emphasis on high quality and a wide range of products offered, the SATEL brand has been highly appreciated in the industry for 30 years.

This philosophy of management and hard work of more than 300 SATEL's employees produce tangible results. The wide range of over 400 offered products provides countless opportunities to create security, home automation, fire alarm, access control and monitoring systems, tailored to the individual needs of each user. At the same time, these systems meet all requirements prescribed by Polish and international regulations and industry standards.

Bringing the functionality of devices into line with current requirements and expectations of the market with the use of the latest technologies is one of the main objectives of SATEL. For this reason the design and production departments of the Company are continuously being modernized and expanded. A natural consequence of all actions aimed at the production of top-quality devices was the introduction of the quality management system conforming to ISO 9001 in 2002. Regardless of this certification, SATEL also carries out a full functional test of all products leaving the production line, thus ensuring reliability of the manufactured devices. Focusing on modern design and attaching importance to the highest levels of quality and functionality of its products, SATEL has gained many satisfied customers not only in Poland but also in more than 50 markets worldwide.