



GRADE 3

EN 50131-1

**SECURITY - ESSENTIAL PART
OF YOUR BUSINESS**

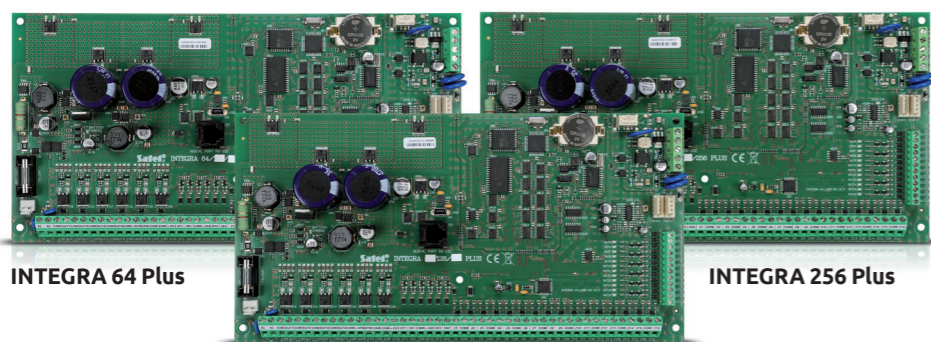
Protection of buildings with a medium to high risk of burglary, especially critical infrastructure facilities, requires a security system that meets the EN 50131-1 criteria for **Grade 3**.

Grade 3 is a measure of the alarm system immunity to the actions of persons which are not authorized to stay within the protected premises. This means that a thorough familiarity with alarm systems and the ability to use specialized tools are needed to disable such security measures.

QUALITY, RELIABILITY, SECURITY

Given their full compliance with the requirements of EN 50131-1 Grade 3, the **INTEGRA Plus** control panels are a perfect choice for creating advanced alarm systems, wherever a special level of security is required.

In addition to detecting and signaling an attempted intrusion or hold-up, these devices also offer simplified access control functions and the ability to implement building automation.

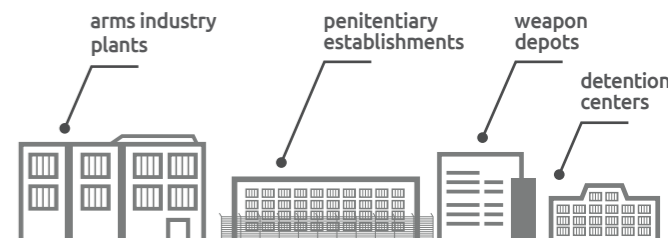
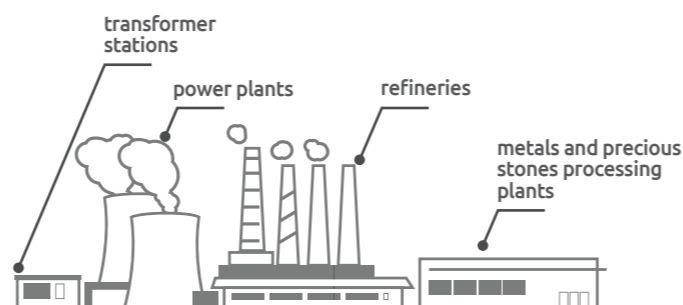
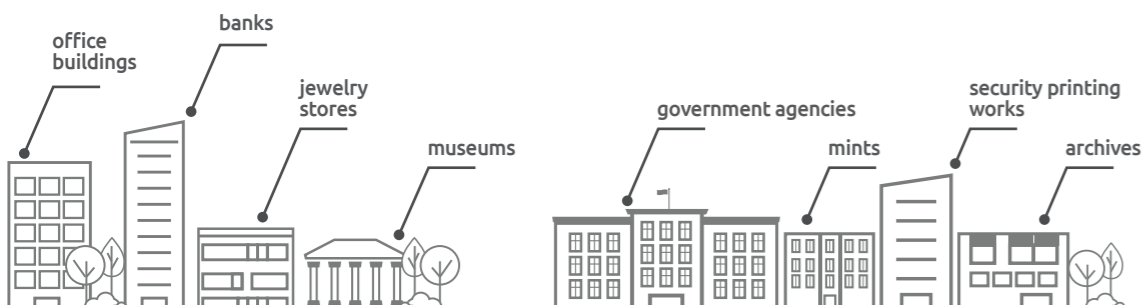


INTEGRA 64 Plus

INTEGRA 256 Plus

INTEGRA 128 Plus

Grade 3 requirements have been developed to ensure security of such facilities as:



Devices of an alarm system meeting the Grade 3 requirements must be characterized by strictly defined properties and have the functions required by the standard.

Keypads

The following models of keypads have double tamper protection and meet the rigorous criteria for resistance to mechanical damage, as required by the standard.

INT-TSI

Keypad with capacitive touch screen and flat design graphical interface. It offers the possibility of viewing images from IP cameras and increasing the maximum number of keypads in the system (up to 16) thanks to the MASTER/SLAVE option. It also allows you to personalize the functionality and appearance of the user interface.



7" screen diagonal | 3 enclosure colors



INT-TSG/INT-TSH

Keypads with capacitive touch screen. Both devices allow the status screen to be customized to suit the user's needs. They also have the option of triggering FIRE, AUX and PANIC alarms. In addition, the INT-TSG has LED indicators of the system state.

4,3" screen diagonal | 7" screen diagonal | 3 enclosure colors

INT-KLCD/INT-KLCDR/INT-KLFR

Keypads with the traditional user interface and LCD display. All devices are provided with two zones. INT-KLFR comes with two 3EOL zones.



INT-KLCD/INT-KLCDR | 2 colors of backlight



INT-KLFR | 3 enclosure colors

Partition keypad

INT-SCR

Multifunctional partition keypad with a proximity card reader. If necessary, it allows double verification, based on contactless card and password. The device features double tamper protection.



Detectors

OPAL Pro, AGATE, SLIM-PIR-PRO and SLIM-DUAL-PRO detectors have double tamper protection (against opening and forcible detachment from the wall) and active IR antimasking according to EN 50131-2-4.

Active IR antimasking makes it possible to instantly detect attempts to disable the devices (by covering, taping up or painting over) and send the information to the alarm control panel. Depending on the system configuration, notification of the existing situation may be sent to the user, security agency or appropriate services.

OPAL Pro



2 enclosure colors

AGATE



SLIM-PIR-PRO and SLIM-DUAL-PRO



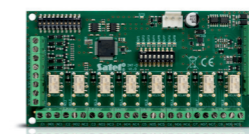
Grade 3 refers only to indoor applications

Expansion modules



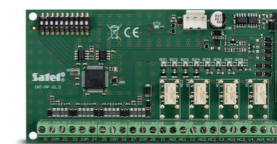
INT-E

The module enables expansion of the system by 8 zones, including 3EOL ones.



INT-O

Expansion module adding 8 OC or relay type outputs to the alarm system.



INT-PP

Zone and output expansion module adding to the system 8 zones and 8 outputs, including 4 OC type and 4 relay type outputs. The device supports 2EOL and 3EOL zones.

Power supply

Backup power supplies ensure uninterrupted operation of the system when the main power supply fails or is not available, even for many hours. In the event of a power failure, these devices provide power from the connected battery.

APS-612

The model is equipped with short-circuit and overload protections. Its output current capacity is 6 A (3 A power supply + 3 A battery charging) and is designed to supply devices operating at 12 V DC.

High energy efficiency, very good power supply parameters, anti-interference filter and active power factor correction (PFC) (up to 0.98) are special advantages of this backup power supply.



Enclosures

The OMI series enclosures will be an ideal choice for Grade 3 installations. They have a solid metal construction and are equipped with solutions that enable detection of tampering - opening or tearing from the ground. This group includes: **OMI-4**, **OMI-3**, **OMI-2**, **OMI-1** with integrated transformer, as well as surface-mounted **OMI-5** enclosure.

Among the plastic enclosure solutions that meet the Grade 3 requirements, the **OPU-3** and **OPU-4 P** models are available, in which you can install wireless devices with their antennas. Both versions have also been equipped with double tamper protection.



RELIABLE COMMUNICATION AND EFFECTIVE MANAGEMENT

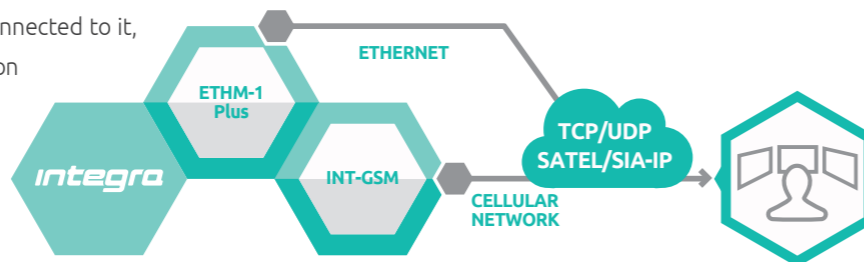


EFFECTIVE REPORTING

Transmission of information to the monitoring station is an important function of the alarm system from the aspect of immediate reaction to the existing danger. The INTEGRA Plus control panels can use for this purpose the built-in telephone communicator, as well as additional modules enabling communication via cellular and Ethernet networks.

DUAL PATH REPORTING

When used in conjunction with the Ethernet module (**ETHM-1 Plus**) and the cellular communication module (**INT-GSM**) connected to it, the INTEGRA Plus control panel enables the implementation of so-called **DUAL PATH REPORTING** to the monitoring station. By default, cellular network is a backup communication channel for Ethernet, which guarantees effective transfer of information.



PARTITIONS

32
8

When securing extended facilities with a large number of stories and rooms, a very useful solution is to divide the system into **partitions**. A group of detectors (zones) can work in a single partition. The partition can be armed or disarmed independently, e.g. on a given floor, or within a selected location, or on the perimeter of the protected building (walls, windows, fencing) as well as on the property.

The alarm system can also be divided into **objects**, i.e. independent areas (e.g. premises of various companies within one office building) supervised by one control panel.

Partitions and objects make it easier to adjust the system's functionality to a specific situation, while providing greater convenience in administering the alarm system.

The INTEGRA Plus control panels offer the option of dividing the system into **32 partitions** and **8 objects**.



FULL-SCOPE PRODUCTION TESTS

100% of devices manufactured by SATEL, including those meeting Grade 3 criteria, undergo multi-step quality control at each production stage. Testing and examination include functional, hardware and environmental aspects.

FLEXIBLE OPERATION METHODS

The system may be controlled in a number of ways, e.g. using passwords entered from keypads or proximity cards, as well as remotely, using a mobile application (**INTEGRA CONTROL**) or remote control keyfobs. It definitely makes daily use of the system easier for the users. In special cases, verification of a person is possible by using a combination of several methods of authorization.



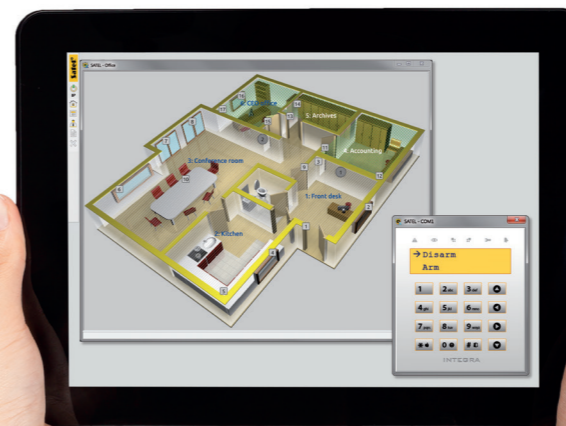
PERSONALIZED AUTHORITY LEVELS

An advantage of the INTEGRA Plus system is the possibility of granting rights to individual users. Thus, each user can have access only to the necessary functions and selected areas, which makes everyday system operation easy and intuitive and user administration convenient and fast.

CONFIGURATION AND SERVICE

The **DLOADX** program is used for local as well as remote configuration and servicing of the system. It allows necessary modifications to be introduced immediately, also by installers located outside the premises.

With such an effective tool, the INTEGRA Plus control panels allow you to quickly carry out diagnostic tests, and customize the system functionality to new users' expectations and emergency situations.



SYSTEM ADMINISTRATION

Using the capabilities of the **GUARDX** application, supervision and management of the alarm system are possible locally or remotely from any location in the world. The offered functions, including verification of the current state of the system, viewing the image from IP cameras, and managing the users, can be used e.g. in the security management center, to support supervision of the premises 24 hours a day.

SOLUTIONS FOR MULTI-BRANCH INSTITUTIONS AND COMPANIES

Integrated management

Premises of multi-branch institutions and companies require effective centralized security management. This capability is offered by **INTEGRUM**, the software that integrates many installations into one scalable and extremely user-friendly system.

Its scalability, intuitive interface and a centralized database of users, settings, events and building-related information, allow effective administration of premises, even from many locations at the same time.



Remote access to the system is possible via a web browser, also on mobile devices. Two-way data transmission is encrypted with the AES-192 algorithm. The information is transmitted in real time, without the need to refresh the page.

The solution provides effective security supervision, instant response to detected events and cataloging of devices. It also allows flexible system expansion by adding further security areas.

INTEGRUM significantly optimizes the costs of system implementation and development, and enables ongoing verification of incurred expenses, and thus real savings.

Are you interested in the solutions presented in this leaflet? For more information, please visit:

www.satel.eu

The manufacturer reserves the right to change the specification and technical data of devices. Images shown are for general information only and may differ from actual products U-GRADE3-EN0320

Precision access control system

Integration of the INTEGRA Plus system with the **ACCO NET** access control system facilitates security management. The advanced ACCO NET functionality and its distributed structure are in line with the requirements of large and medium-sized multi-branch entities.

The main components of the system are **ACCO-NT** control panels, **ACCO Server** software and **ACCO-KP** series controllers with connected readers for user identification.

Simplicity and ease of use are guaranteed by the **ACCO Web** application available through the web browser. The tool allows you to manage your system from any location.

ACCO NET offers administration of any number of premises in various system configurations. It supports up to 65,000 users and can be managed from multiple locations at the same time.

Convenient integration of ACCO-NT with many alarm control panels ensures:

- facilitated supervision of security and access in protected buildings
- linking of zones/partitions:
 - » easy administration of ACCO NET user rights
 - » control of INTEGRA Plus system partitions by 8,000 ACCO-NT users
 - » possibility of arming/disarming integrated partitions from terminals, **ACCO Soft** and **ACCO Web** programs
 - » visualization of states of alarm control panel partitions, zones and outputs
- shared history of events
- possibility of programming automatic blocking/unblocking of selected doors in case of burglary/fire alarm in the premises.

